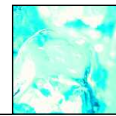


MEGA TOP REFRIGERATED SALAD / SANDWICH TABLES



Project _____
 Location _____
 Item # _____
 Qty _____

FMT SERIES

Models: FMT-27-12 FMT-60-24
 FMT-48-18 FMT-72-30

Standard Features

- Stylish “European Design” with “American Durability”.
- Insulated hood and lid keeps pan temperature colder and minimize condensation. Removable for easy cleaning.
- Forced air design underneath the pans to keep products fresher and maintain temperatures between 33° F to 38° F in the interior cabinet and 41° F in the top rail.
- 22 gauge heavy duty stainless steel doors with rounded corners and durable stainless steel hinges gives you the combination necessary to protect your long term investment.
- All stainless steel construction exterior and interior provides a cleaner and safer food environment.
- Standard full set of (1/6 size) NSF approved, clear polycarbonate insert pans, 4” deep.
- Front breathing refrigeration system for built in applications
- 10” full length removable and reversible white polyethylene cutting board.
- Ships on 4” casters, front 2 with brakes.

Options and Accessories

- 6” adjustable legs (set of 4)
- Flat cover in lieu of telescoping cover
- Epoxy coated shelves (clips included)
- Pan dividers
- Stainless steel back panel
- *Single tier overshelf
- *Double tier overshelf
- 220 volts / 50 cycles / 1 phase

* Except 27” and 60” units



FMT-27-12 Shown



FMT-48-18 Shown



Conforms to UL and NSF-7 standards

REFRIGERATOR

Model	Doors	Top Pans	Shlvs.	Amps	HP	Voltage	NEMA Plug	Cord Length	Cabinet Dimensions			Shipping	
									L	D*	H**	Wt.	Cubes
FMT-27-12	1	12	1	5.1	1/3	115/60/1	5-15P	8' <small>(2,439 mm)</small>	27" x <small>(686 mm)</small>	36 1/2" x <small>(762 mm)</small>	41 5/8" x <small>(1057 mm)</small>	225 <small>(97 kg)</small>	36 <small>(.94 m3)</small>
FMT-48-18	2	18	2	6.0	1/3	115/60/1	5-15P	8' <small>(2,439 mm)</small>	48" x <small>(1,219 mm)</small>	36 1/2" x <small>(762 mm)</small>	41 5/8" x <small>(1057 mm)</small>	327 <small>(139 kg)</small>	60 <small>(1.56 m3)</small>
FMT-60-24	2	24	2	7.3	1/2	115/60/1	5-15P	8' <small>(2,439 mm)</small>	60" x <small>(1,524 mm)</small>	36 1/2" x <small>(762 mm)</small>	41 5/8" x <small>(1057 mm)</small>	380 <small>(168 kg)</small>	73 <small>(1.93m3)</small>
FMT-72-30	3	30	3	8.0	1/2	115/60/1	5-15P	8' <small>(2,439 mm)</small>	72" x <small>(1,829 mm)</small>	36 1/2" x <small>(762 mm)</small>	41 5/8" x <small>(1057 mm)</small>	465 <small>(207 kg)</small>	87 <small>(2.01 m3)</small>

*Depth does not include 1” bumper. **Height does not include 4” casters or 6” optional legs.

FAGOR



Fagor Commercial, Inc.
 12800 N.W. 38th Avenue, USA
 Miami, FL 33054-4525
 Ph: (305) 779 - 0170 • Fax: (305) 779 - 0173

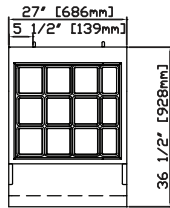
1-866- GO FAGOR



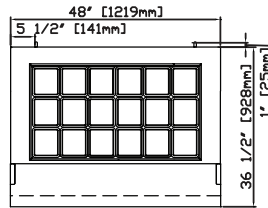
www.fagorcommercial.com

FMT SERIES

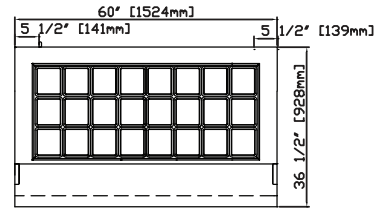
MEGA TOP REFRIGERATED SALAD / SANDWICH TABLES



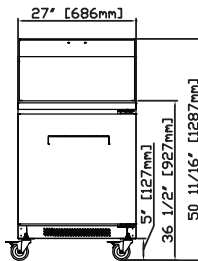
FMT-27 TOP



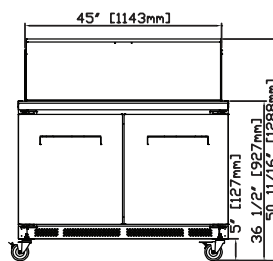
FMT-48 TOP



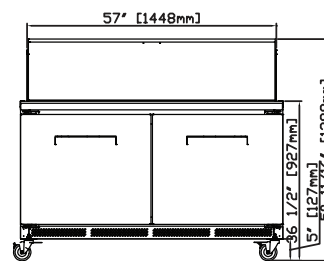
FMT-60 TOP



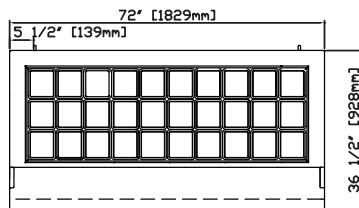
FMT-27 FRONT



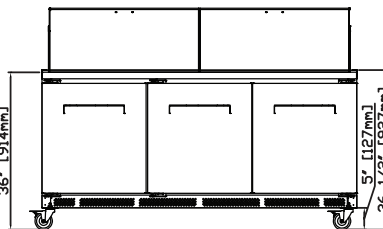
FMT-48 FRONT



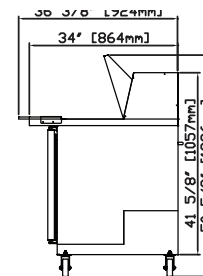
FMT-60 FRONT



FMT-72 TOP



FMT-72 FRONT



FMT SECTION

SPECIFICATIONS

Construction: Heavy duty stainless steel exterior top, front and sides. Galvanized back panel. Interior completely constructed of heavy duty stainless steel, coved corner floor.

Door is completely stainless steel interior and exterior with hinged solid doors and positive seal. Magnetic door gaskets removable without tools, self closing with 120° stay open feature. Recessed door handle. Door heaters. Door openings have a plastic breaker strips to retard condensate formation.

Unit comes complete with a 2" CFC-Free polyurethane insulation, foamed in place. One adjustable epoxy coated shelves provided per section.

Refrigeration system: Self contained capillary tube system using environmentally friendly (CFC Free) R-134a refrigerant. Front breathing for built-in applications. Evaporator coil is mounted to interior top panel encased in stainless steel. Large fan motor and fan blades for better air flow.

Tables are designed to maintain temperatures between 33° F to 38° F in the interior cabinet and 41° F in the top rail.

Features: 10" wide removable and reversible cutting board, NSF approved white polyethylene, 1/2" deep.

Stainless steel insulated hood and top lid keeps pan contents colder. Durable, long lasting, and removable for easy cleaning.

Comes standard with standard 1/6 size, (FMT-27-12 standard with (9) 1/6 size & (3) 1/9 size) clear polycarbonate, NSF approved 4" deep food pans and adaptor bars.

Others: Unit is supplied standard with an 8' cord and plug (Nema 5-15p). Standard 4" diameter casters, front 2 with brakes.

Warranty: One year labor and parts warranty. 5 year compressor warranty (Continental U.S.A. only).



Fagor Commercial, Inc.
12800 N.W. 38th Avenue, USA
Miami, FL 33054-4525
Ph: (305) 779 - 0170 • Fax: (305) 779 - 0173

www.fagorcommercial.com

The manufacturer reserves the rights to modify materials and specifications without notice.
Printed in the USA • 02/09