

BACK BAR REFRIGERATION



Project _____
 Location _____
 Item # _____
 Qty _____

FBB SERIES

- Models:**
- | | | | |
|-----------------------------------|-----------------------------------|-----------------------------------|-----------------------------------|
| <input type="checkbox"/> FBB-59 | <input type="checkbox"/> FBB-69 | <input type="checkbox"/> FBB-79 | <input type="checkbox"/> FBB-95 |
| <input type="checkbox"/> FBB-59G | <input type="checkbox"/> FBB-69G | <input type="checkbox"/> FBB-79G | <input type="checkbox"/> FBB-95G |
| <input type="checkbox"/> FBB-59S | <input type="checkbox"/> FBB-69S | <input type="checkbox"/> FBB-79S | <input type="checkbox"/> FBB-95S |
| <input type="checkbox"/> FBB-59GS | <input type="checkbox"/> FBB-69GS | <input type="checkbox"/> FBB-79GS | <input type="checkbox"/> FBB-95GS |

Standard Features

- Refrigeration system is a free flowing air system throughout the box to ensure "ICE COLD" products at all times.
- Heavy duty 18 gauge stainless steel top.
- Stylish wear resistant black painted steel finish front, sides and back.
- Unit comes standard w/(1) door with 2 flat shelves and balance with (2) bottle rails per door.
- "G" models have glass doors with black frames.
- "S" models with stainless steel front, sides and back.
- "GS" models have glass doors with aluminum frames, stainless steel front, sides and back.
- Durable stainless steel floor and reinforced bottom door frame
- Slide out condenser unit for serviceability.
- Flush cabinets to allow side by side installations.
- Analog thermostat.
- Incandescent interior light.



FBB-59GS Shown



FBB-69 Shown



FBB-95G Shown

Options and Accessories

- 3" casters.
- 6" Adjustable stainless steel legs.
- Additional flat shelves.
- Additional shelves w/ fixed rails.
- 220v/ 50 cycles/ 1phase



Conforms to UL and NSF-7 Standards

BACK BAR REFRIGERATION

Model	12oz. Cans	# of Doors	# of Shelves	Barrels	Cu. Ft	HP	Amps	Volts	Cabinet Dimensions			Shipping		
									L	D	H	WT.	Cubes	
FBB-59(G)(S)	852	2	4	3	23.7 (671 litres)	1/3	6.5	115	59" x 28" x 37"	(1499mm)	(711mm)	(940mm)	343 (156 kg)	51 (1.44m ³)
FBB-69(G)(S)	1014	2	4	3	28.0 (793 litres)	1/3	6.5	115	69" x 28" x 37"	(1753mm)	(711mm)	(940mm)	370 (168 kg)	59 (1.67m ³)
FBB-79(G)(S)	1092	3	6	4	30.8 (872 litres)	1/3	6.7	115	79 1/2" x 28" x 37"	(2019mm)	(711mm)	(940mm)	396 (180 kg)	68 (1.92m ³)
FBB-95(G)(S)	1302	3	6	5	39.2 (1110 litres)	1/3	6.7	115	95" x 28" x 37"	(2019mm)	(711mm)	(940mm)	429 (195 kg)	81 (2.29m ³)



Fagor Commercial, Inc.
 12800 N.W. 38th Avenue
 Miami, Fl. 33054-4525 USA
 Ph: (305) 779-0170 • Fax: (305) 779-0173

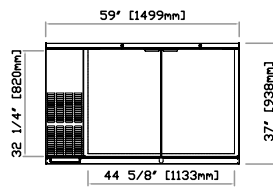


1-866- GO FAGOR

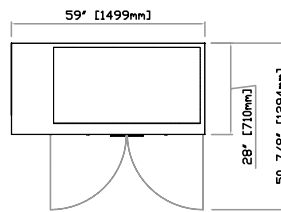
www.fagorcommercial.com

FBB SERIES

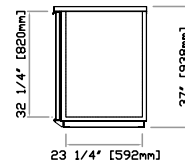
BACK BAR REFRIGERATION



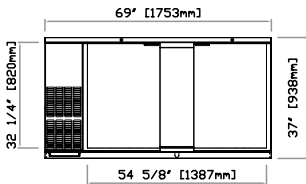
FBB-59 FRONT



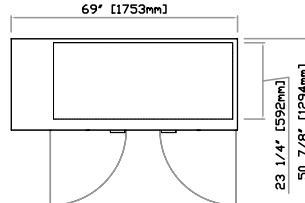
FBB-59 TOP



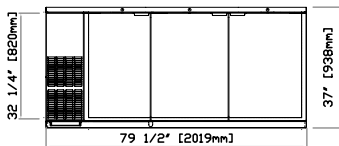
FBB SECTION



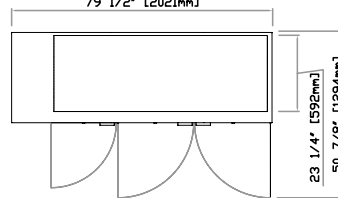
FBB-69 FRONT



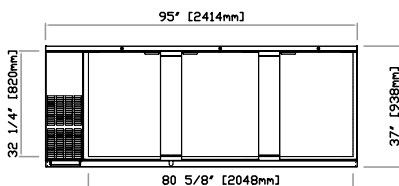
FBB-69 TOP



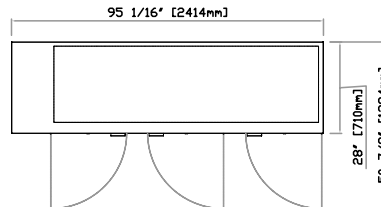
FBB-79 FRONT



FBB-79 TOP



FBB-95 FRONT



FBB-95 TOP

SPECIFICATIONS

Construction: Heavy duty stainless steel top, 18 gauge. Painted black front, sides and back. (S) Model's have stainless steel front, sides and back. Interior constructed of heavy duty galvanized steel walls with coved corner stainless steel floor. No gap inbetween equipment for side by side installation.

Door is comprised of a heavy duty black painted steel. (S) Models are stainless steel. (G) Models are a dual pane glass with black aluminum frame. (GS) Models are a dual pane with aluminum frame. Provided with locks per door, magnetic door gaskets, removable without tools. Door openings have a plastic breaker strips to retard condensate formation.

Unit comes complete with a 1-1/2" CFC-Free polyurethane insulation, foamed in place. Two adjustable epoxy coated shelves provided per section standard. One section with standard flat shelves, balance with fixed bottle rails.

Refrigeration system: Self contained capillary tube system using environmentally friendly (CFC Free) R-134a refrigerant. Front breathing compressor on left side.

Evaporator coil is mounted to interior top panel encased in stainless steel. Large fan motor and fan blades for greater air flow. Automatic condensate evaporator, no drain connection required: evaporator condensate has been plumbed to a condensate pan located in the compressor housing.

Access for the condensing unit behind the front grill, slides out for easy cleaning and maintenance.

Cabinets are designed to maintain temperatures between 33° F to 38° F in the interior cabinet.

Lights: Interior fluorescent light.

Others: Unit is supplied standard with a 8' cord and plug (Nema 5-15p).

Warranty: One year labor and parts warranty. 5 year compressor warranty (Continental U.S.A. & Canada only).



Fagor Commercial, Inc.

12800 N.W. 38th Avenue
Miami, Fl. 33054-4525 USA

Ph: (305) 779-0170 • Fax: (305) 779-0173

www.fagorcommercial.com

The manufacturer reserves the rights to modify materials and specifications without notice.
Printed in the USA • 08/09